



SAILING INSTRUCTIONS

23-27 August 2023

Niterói, Brazil


1. RULES

- 1.1. The event will be governed by the rules as defined in The Racing Rules of Sailing (RRS).
- 1.2. No National prescriptions will apply.
- 1.3. ILCA class rule 7(a) is restricted as follows: “Only one competitor shall be on board whilst racing. The competitor shall be named on the entry form.”
- 1.4. In accordance with ILCA class rule 22(e), the use of heartbeat monitor with no additional function or capability is permitted. The heartbeat monitor device shall comply with the class rule 22.
- 1.5. Appendix P, Special Procedures for Rule 42, will apply as amended in SIs 14.
- 1.6. Appendix T, Arbitration, will apply.
- 1.7. In all rules governing this event:
 - 1.7.1. [NP] denotes a rule that shall not be grounds for protests by a boat. This changes RRS 60.1(a).
 - 1.7.2. [SP] denotes a rule for which the race committee or technical committee may apply a standard penalty without a hearing or a discretionary penalty may be applied by the international jury with a hearing. However, the race committee or technical committee may protest a boat if it considers a standard penalty is inappropriate. A boat that has been penalized with a standard penalty shall neither be protested by another boat for the same incident nor can another boat request redress for this committee action. This changes RRS 60.1, 63.1 and A5.
- 1.8. Decisions of the international jury will be final as provided in RRS 70.5.
- 1.9. [NP] [DP] All competitors and support persons shall follow any reasonable instructions given by a race official.
- 1.10. If there is a conflict between languages the English text will take precedence.

2. COMMUNICATIONS AND IMPORTANT LOCATIONS

2.1. Notices to competitors will be posted online only, on the Official Notice Board (ONB) which will be the WhatsApp Group “MASTER ILCA CSA ONB”. SI 2.2 shows the electronic address and the QR code to enter the group.

2.2. The important locations:

	Location
Official Notice Board	https://chat.whatsapp.com/BuLJFE9D091FLKInp5grDD 
Official Flagpole	In front of the Ramp.
Race Office	Wooden counter in front of the Optimist cradles.
Hearing Room	Sala de Vela Comandante Érico – Close to the Race Office

2.3. [DP] While afloat, a competitor shall not carry equipment capable of making or receiving voice or data transmissions, except for equipment provided by the organising authority.

3. CHANGES TO SAILING INSTRUCTIONS

3.1. Any change to the sailing instructions will be posted no later than 2 (two) hours before the warning signal of the race on the day it will take effect except that any change to the schedule of races will be posted by 20:00h on the day before it will take effect.

4. [DP] REGISTRATION, BOATS & EQUIPMENT INSPECTION

4.1. Each competitor shall register at the race office and complete all required registration and equipment inspection formalities before racing. A competitor that does not complete all required registration and equipment formalities will not be entered to the event under RRS 75.

4.2. Information on equipment inspection will be posted on the official notice board. Boats shall be presented with all equipment that shall be used in the event.

4.3. Equipment inspection will take place at the boat park according to the schedule posted on the official notice board.

4.4. Equipment, including wet clothing may be inspected at any time for compliance with the class rules and the sailing instructions according to the following procedures:

4.5. A competitor may be instructed by the technical committee, either ashore or on the water, to proceed immediately to the inspection area for inspection.

4.6. Until permission is given by the technical committee, a competitor once instructed to proceed for inspection, shall have no unauthorized contact with any support person, no person shall join or leave the boat, no equipment or other item shall be taken on or off that boat and the boat shall not leave the inspection area.

4.7. In the event of damage, hulls and equipment listed in NOR 5.1 may only be replaced with the written permission of the technical committee. If the damage occurs between 2 (two) hours before the first scheduled start on a racing day, and before the start of the last race of the day, provisional verbal permission shall be obtained from the technical committee, international jury or race committee and the written permission of the technical committee shall be applied for before the end of the protest time limit at the end of the day in which the replacement takes place.

5. SIGNALS MADE ASHORE

- 5.1. Signals made ashore will be displayed at the official flagpole.
- 5.2. [DP] [NP] A boat shall not leave the shore until flag D (with one sound signal) is displayed. The warning signal will be made not less than 45 minutes after flag D is displayed.
- 5.3. When flag AP is displayed ashore, '1 minute' is replaced with 'not less than 45 minutes' in the race signal AP. This changes RRS Race Signals.

6. FORMAT OF RACING

- 6.1. The event consists of a single series.
- 6.2. 8 races are scheduled with a maximum of 2 races per day. A 3rd race may be sailed if the scheduled is not

7. SCHEDULE

- 7.1. Event Schedule:

Date	Time	Activity
23 August	09.00 - 12.00	Registration
	13.00 - 18.00	Equipment Inspection & Registration
24 August	10:30	Opening ceremony
	11:00	Skipper's Meeting
	13:00	Races
	After races	Welcome Drink at the deck close to the beach.
25 August	10.30	Skipper's Meeting
	12:00	Races
	After Races	Drinks and Sandwiches at the deck close to the beach
26 August	10.30	Skipper's Meeting
	12.00	Races
27 August	10.30	Skipper's Meeting
	12.00	Races
	After Protests	Prize Giving at the deck close to the beach.

- 7.2. Each day succeeding races will be started as soon as practicable after the finish of the previous race.
- 7.3. On the last day of the championship, no warning signal will be made after 16:00h.

8. RACING AREAS

- 8.1. Addendum B shows the racing areas. The racing area is defined as an area extending 100 meters beyond the entire course in which a boat would normally sail while racing.
- 8.2. [DP] Boats not racing shall avoid the racing area.
- 8.3. The RC will inform on the ONB, before flag D is displayed, the racing area where it intends to run the races.

9. COURSES

- 9.1. Addendum C shows the course designations, including the course signals, the order in which marks are to be passed, and the side on which each mark is to be left.
- 9.2. No later than the warning signal, the race committee signal vessel will display the approximate compass bearing of the first leg.
- 9.3. The leeward gate may be replaced by a single mark; in this case the mark shall be left to port.

10. MARKS

- 10.1. Course marks 1, 2, 3s, 3p, 4s, 4p will be orange inflatable buoys.
- 10.2. For ILCA-6, in LR Courses, mark-1 will be a yellow inflatable buoy.
- 10.3. The starting marks will be race committee vessels displaying orange flags.
- 10.4. The finishing marks will be a race committee vessel displaying a blue flag and a yellow inflatable buoy.
- 10.5. Alternate marks will be inflatable Yellow buoy with a black band.

11. CLASS FLAGS

- 11.1. ILCA-7 class flag is WHITE with the ILCA logo
- 11.2. ILCA-6 class flag is GREEN with the ILCA logo.

12. THE START

- 12.1. To alert boats that a race or sequence of races will begin soon, the orange starting line flags will be displayed with one sound signal at least 5 minutes before a warning signal is made.
- 12.2. The warning signal for each succeeding race will be made as soon as practicable.
- 12.3. The starting line will be between the staffs displaying orange flags on the starting marks.
- 12.4. [DP] [NP] Boats whose warning signal has not been made shall avoid the starting area during start sequences for other fleets.
- 12.5. A boat starting later than 4 minutes after her starting signal will be scored did not start (DNS) without a hearing. This changes RRS A4 and A5.
- 12.6. Races will be started using either RRS 30.3 (U Flag Rule), or RRS 30.4 (Black Flag Rule).
- 12.7. RRS 30.4 (Black Flag Rule) is supplemented as follows:
 - 12.7.1. Sail numbers will be displayed for at least 3 minutes. A long sound signal will be made when the numbers are initially displayed. A boat whose number is so displayed shall leave the racing area, defined in SI 9.1 before the new preparatory signal. If she fails to do so, she will be scored DNE.

13. CHANGE OF THE NEXT LEG OF THE COURSE

- 13.1. A change of the next leg of the course will first be attempted by changing the position of the original marks. When this is not possible the course will be reset using one or more new marks (described in SI 10). When new marks are already in use, the course may be further reset using the original marks. Any action or no action by the race committee under this instruction will not be grounds for redress under RRS 62.1(a).

14. THE FINISH

- 14.1. The finishing line will be between a staff displaying a blue flag on the race committee vessel at the starboard end and the course side of the finishing mark at the other end of the finish line, except when RRS 32.2 applies.

15. PENALTIES FOR BREACHES OF RRS 42

- 15.1. Appendix P will apply with the following changes:
- 15.1.1. If a first penalty is signaled after a boat has crossed the finish line, the penalty will be a 10% Scoring Penalty calculated as stated in RRS 44.3(c).
 - 15.1.2. RRS P4 is replaced with “An action by the jury under RRS P1.2 shall not be grounds for a request for redress by a boat under RRS 60.1(b). The jury may initiate a redress hearing and may give redress for an action under RRS P1.2 by a member of the jury or its designated observer”.

16. TIME LIMITS AND TARGET TIMES

- 16.1. Time limits and target times are in minutes as follows:

Race Time Limit	Finish Window	Race Target Time
75	20	45

- 16.2. Boats failing to finish within the time stated in the Finish Window, after the first boat sails the course and finishes will be scored Did Not Finish (DNF). This changes RRS 35, A4 and A5.
- 16.3. Failure to meet the target time will not be grounds for redress under RRS 62.1(a).

17. HEARING REQUESTS, ENQUIRIES AND PENALTIES

- 17.1. Hearing request forms are available in front of the Hearings Room or at the race office.
- 17.2. Hearing requests shall be delivered to the official in front of the Hearings Room within the appropriate time limit.
- 17.3. The protest time limit will be set by and posted on the official notice board by the International Jury and may be different for each fleet.
- 17.4. Notices will be posted within 30 minutes of the protest time limit for each fleet to inform competitors of hearings in which they are parties or named as witnesses.
- 17.5. Hearings will be held in the Hearing Room.
- 17.6. To request correction of an alleged error in posted race or series results, a boat shall complete a Scoring Enquiry Form available at the Race Office.
- 17.7. A list of boats that have been penalized for breaking RRS 42 will be posted after racing each day.
- 17.8. Only the Technical Committee or the Race Committee may protest a boat for an alleged breach of the class rules, rules of RRS Part 4 Section B or RRS Appendix G. This changes RRS 60.1(a), 60.2(a) and 60.3(a).
- 17.9. If a boat is sailed without a centerboard stopper, or with no mast retention line attached (class rule 3(b) xi), a scoring penalty of 20% of the score for Did Not Finish rounded to a whole number (rounding 0.5 upward) will, without a hearing, be added to the boats score in the last completed race in which she was racing without a centerboard stopper or the retention line. However, she shall not be scored worse than DNF. This changes RRS 63.1 and RRS A5.
- 17.10. If a sail, top mast, or bottom mast has been changed prior to a race without the permission required by SI 4.6 the competitor will be disqualified without a hearing from the last completed race when the change was used. This changes RRS 63.1 and RRS A5.
- 17.11. [DP] Penalties for any other breach of class rules are at the discretion of the international jury and may be less than disqualification.

18. SCORING

- 18.1. A minimum of 4 (four) races are required to be completed to constitute the championship.
- 18.2. If less than 5 (five) races were completed, a boat's series score will be the total of her race scores.
- 18.3. If 5 (five) or more races were completed, a boat's series score will be the total of her race scores excluding her worst score.
- 18.4. The scoring abbreviation for a penalty imposed under SI 17.9 and 17.10 will be SCP.

19. TITLES & PRIZES

- 19.1. Titles and prizes will be awarded according to the notice of race.

20. [DP] [NP] SAFETY

- 20.1. Rule 40.1 Personal Flotation Devices applies at all times afloat.
- 20.2. A competitor that retires from a race shall notify a race committee, safety or jury vessel as soon as reasonably possible and shall inform the race office immediately after returning to the shore.
- 20.3. Competitors not racing for any of the racing days shall inform the race office as soon as possible.
- 20.4. When the race committee displays flag V with repetitive sounds, all official and support vessels shall monitor the race committee on VHF 72 channel for instructions and assist in search and rescue operations.

21. OFFICIAL VESSELS

- 21.1. Official vessels will be marked as follows:

Vessel	Flag
Jury	White flag with black letters JURY
Race Committee	White flag with black letters RC
Technical Committee	White flag with black letters M
Press, Media	Green flag with PRESS

- 21.2. Failure of an official vessel to fly an identifying flag shall not be grounds for redress by a boat. This changes RRS 62.1(a).
- 21.3. Actions by drones or helicopters shall not be grounds for redress by a boat. This changes RRS 62.1(a).

22. SUPPORT PERSONS AND SUPPORT VESSELS

- 22.1. Support persons shall comply with NOR 10.3.

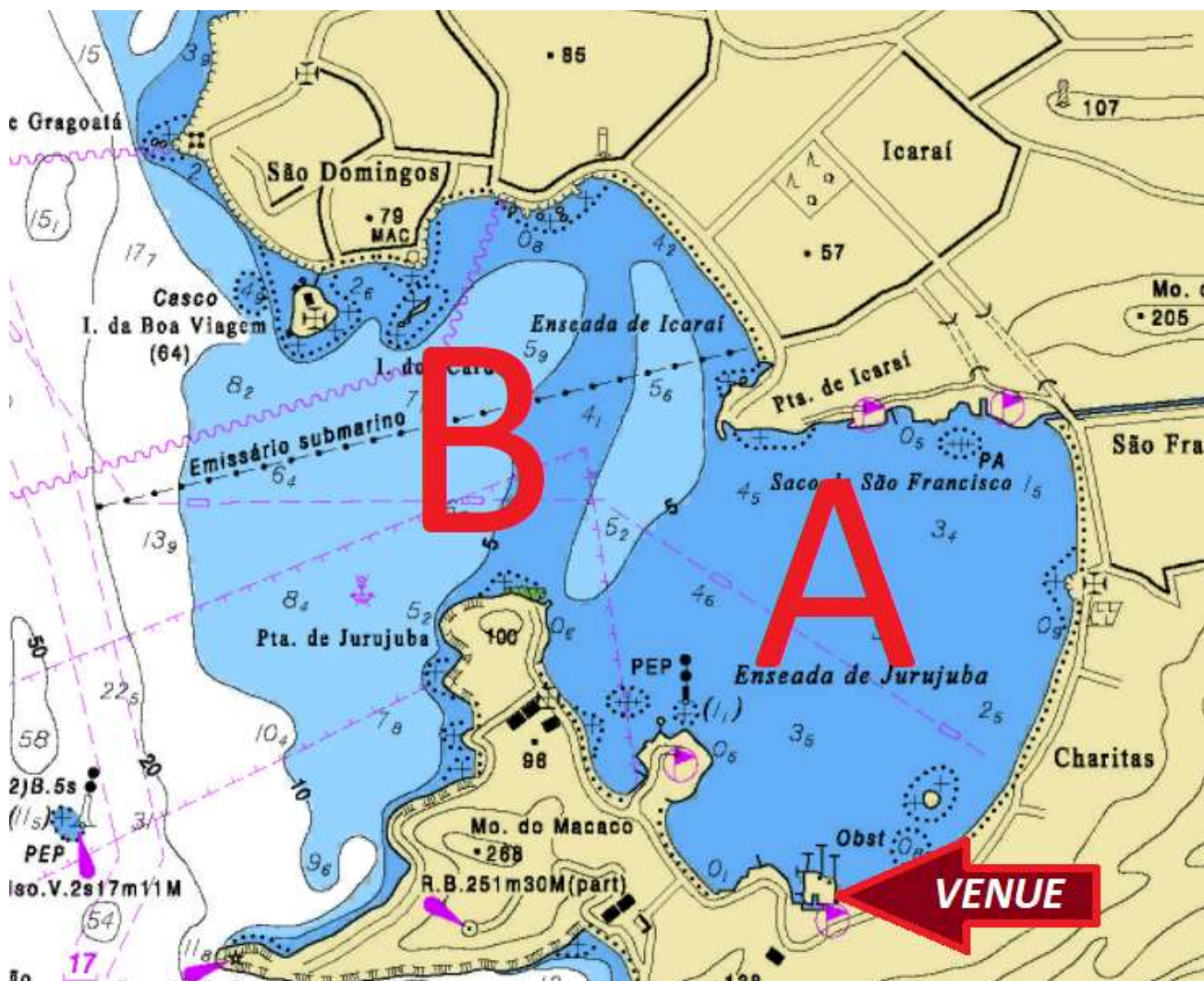
23. TRASH DISPOSAL

- 23.1. Trash may be placed aboard support or official vessels.

24. DISCLAIMER OF LIABILITY

- 24.1. Competitors participate in the event entirely at their own risk. See RRS 3, Decision to Race. The organizing authority will not accept any liability for material damage or personal injury or death sustained in conjunction with or prior to, during, or after the event.

ADDENDUM A – CHART SHOWING RACING AREAS



ADDENDUM B – COURSE DIAGRAMS

LR

Course: Leeward finish

Signal	Mark Rounding Order
LR2	Start - 1 - 4s/4p - 1 - 4p - Finish
LR3	Start - 1 - 4s/4p - 1 - 4s/4p - 1 - 4p - Finish
LR4	Start - 1 - 4s/4p - 1 - 4s/4p - 1 - 4s/4p - 1 - 4p - Finish

I

Course: Inner Trapezoid

Signal	Mark Rounding Order
I2	Start - 1 - 4s/4p - 1 - 2 - 3p - Finish
I3	Start - 1 - 4s/4p - 1 - 4s/4p - 1 - 2 - 3p - Finish
I4	Start - 1 - 4s/4p - 1 - 4s/4p - 1 - 4s/4p - 1 - 2 - 3p - Finish

O

Course: Outer Trapezoid

Signal	Mark Rounding Order
O2	Start - 1 - 2 - 3s/3p - 2 - 3p - Finish
O3	Start - 1 - 2 - 3s/3p - 2 - 3s/3p - 2 - 3p - Finish
O4	Start - 1 - 2 - 3s/3p - 2 - 3s/3p - 2 - 3s/3p - 2 - 3p - Finish